

Technical data sheet

Power supply · 30 W

Switchmode power supplies, Single-phase

Input: wide-range input AC 85–264 V, DC 90–375 V

Output: DC 5 V, 6 A



Identification

Type DRAN30-05A
Part No. [722763](#)

Product version

Datasheet version 01

Input

Number of phases 1
Rated voltage U_N AC 100–240 V
Operation voltage range AC 85–264 V / DC 90–375 V
Frequency range 47 Hz – 63 Hz
Rated current I_N 560 mA @ AC 115 V / 330 mA @ AC 230 V
Inrush current 20 A @ AC 115 V / 40 A @ AC 230 V
Internal fuse T2A / AC 250 V
External protection Mini-circuit breaker: B 4 A

Output

Output voltage/current DC 5 V/6 A
Rated voltage U_N DC 5 V
Rated current I_N 6 A
Power Dissipation 8.5 W @ AC 230 V
Setting range $U_{out\ min.}/U_{out\ max.}$ 5.0-5.5 V
Accuracy $\pm 1\ %$
Load regulation $\pm 0.5\ %$
Line regulation $\pm 0.5\ %$
Rise time 2 s
Temperature coefficient $\pm 0.03\ \% / ^\circ C$
Ripple and noise $< 50\ mV$
Hold up time 20 ms @ 115 V / 30 ms @ 230 V

USA: LUTZE INC.

13330 South Ridge Drive • Charlotte, NC 28273, USA
Tel. +1 (704) 504-0222 • Fax +1 (704) 504-0223
www.lutze.com • info@lutze.com

10.11.2022 • Subject to technical modification

Part No. [722763](#) • Datasheet version: 01

page 1 of 4



SYSTEMATIC TECHNOLOGY

Technical data sheet

Power supply · 30 W

Parallel / redundant mode	Max. 2 devices / via external decoupling diodes e.g. 722987
Efficiency	79 %
Over voltage protection	125–137 %
Rated over load protection	110–150 %
Short circuit	Fold Forward

Status indication

Status indication DC ON LED green <3.5 V

General

Switching frequency	55 – 135 kHz
Insulation voltage input / output	DC 4.2 kV
Insulation voltage input / ground	DC 2.1 kV
Insulation voltage output / ground	DC 710 V
Insulation resistance at DC 500 V	100 MΩ
Derating	2.5 %/°C starting 61 °C
Cooling	Air convection, 25 mm clearance all-round
Housing material	Plastic
Mounting	DIN rail mountable TS35 (EN 60715)
Max. altitude operation	5000 m (EN 62368-1)
Installation position	Vertical
MTBF	612000 h
Degree of protection	IP20
Protection class	I
Weight/unit	0.35 kg
Connection type	Screw terminal 0.20 mm ² – 2.5 mm ² AWG 26 – AWG 12
Dimensions (w × h × d)	40.5 mm × 90.0 mm × 115.0 mm
PU (units)	1

General ambient conditions

Operation temperature range	-40 °C ... +70 °C (Derating)
Storage temperature range	-40 °C ... +85 °C
Over voltage category	II
Degree of pollution	2
Relative air humidity	20 – 95 % RH, not condensing

Approvals/Standards

Approvals	UL 508 Listed (E249179) UL 60950-1 CE UKCA
-----------	---

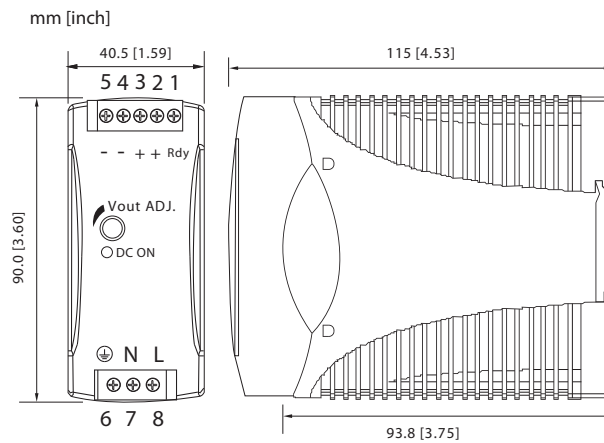
Technical data sheet

Power supply · 30 W

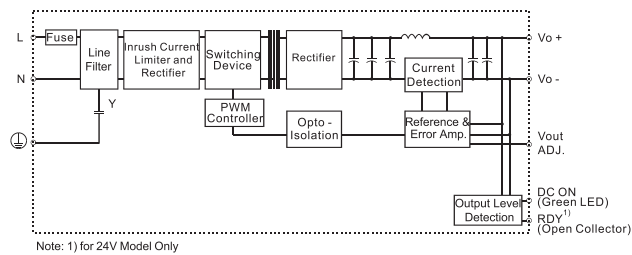
Standards

IEC/EN 62368-1
 EN 61000-6-3
 EN 55032 Class B
 EN 61000-3-2 Class D
 EN 61000-3-3
 EN 61000-6-2
 EN 55024
 EN 61000-4-2 Level 4
 EN 61000-4-3 Level 3
 EN 61000-4-4 Level 4
 EN 61000-4-5 L-N Level 3
 L/N-FG Level 4
 EN 61000-4-6 Level 3
 EN 61000-4-8 Level 4
 EN 61000-4-11 ENV 50204 Level 2
 EN 61204-3

Dimensions



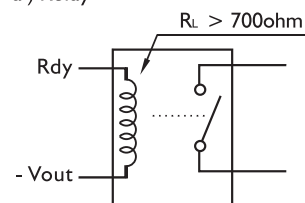
PIN assignment



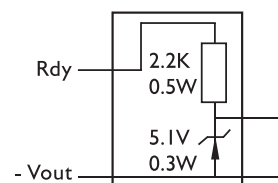
Use

Rdy connection

a) Relay



b) 5V signal

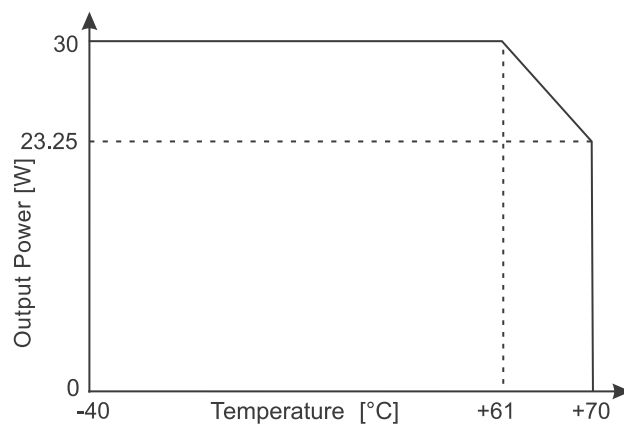


Note: for 24V Model only

Technical data sheet

Power supply · 30 W

Derating



Short circuit characteristics

